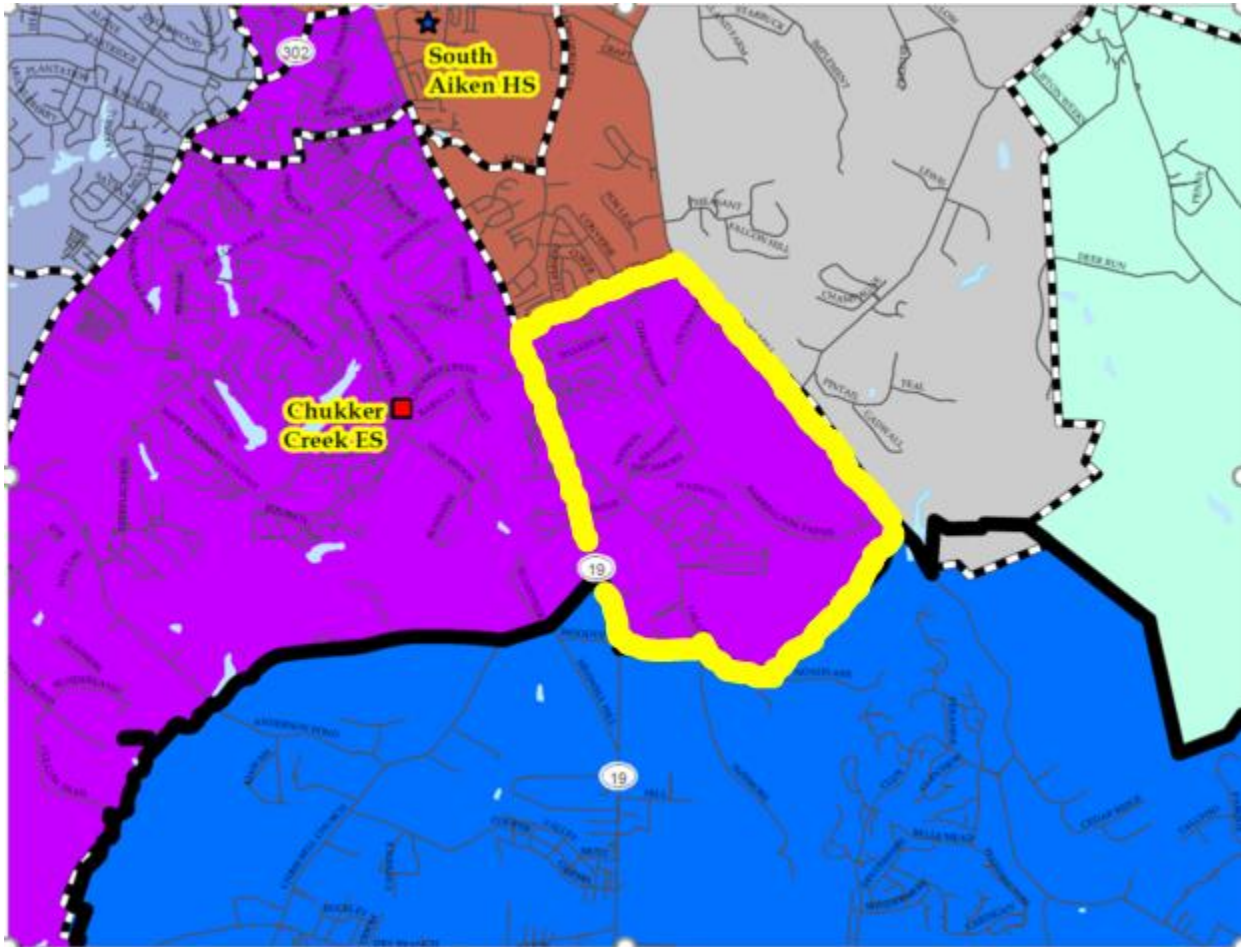


## Possible Amendments to Boundary Realignment Recommendations

Amendments 1-3 are direct shifts of students from East Aiken to Chukker Creek. “Trades” would create or expand non-contiguous zones.

### Amendment 1



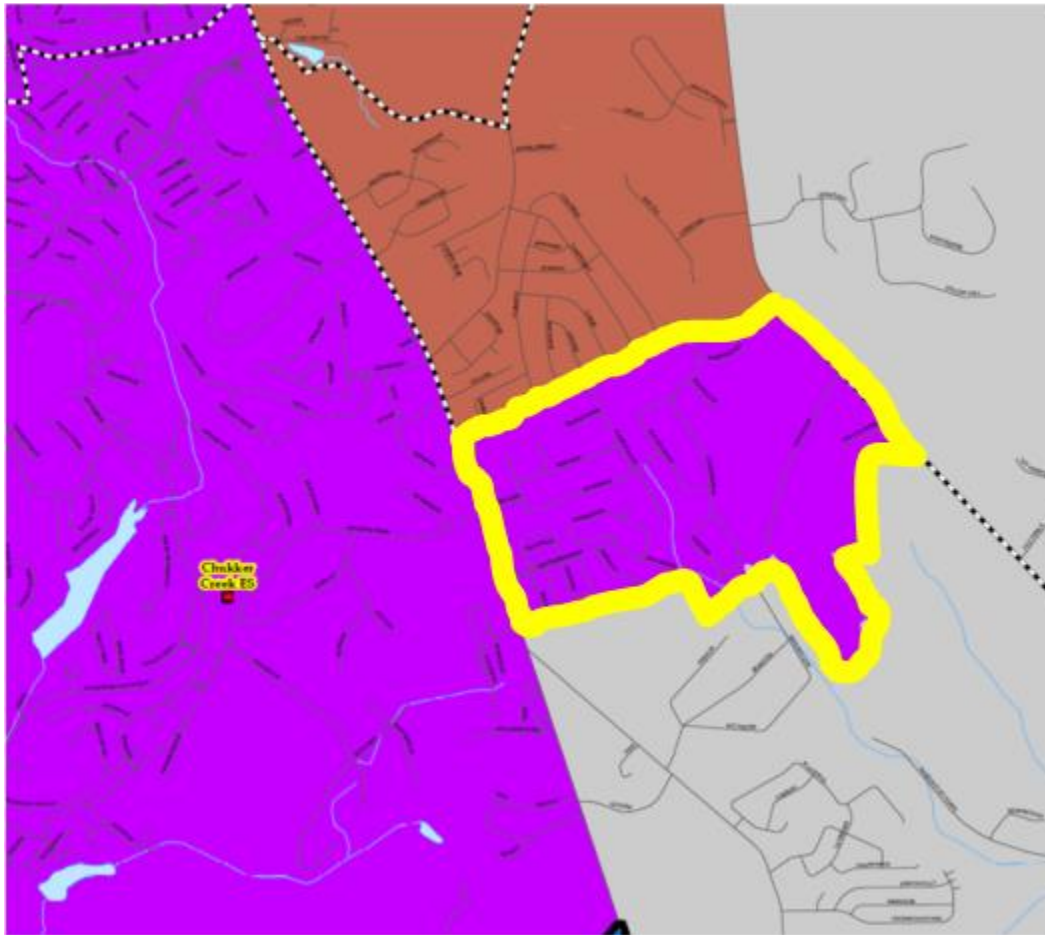
### Description

Areas proposed for East Aiken Elementary south of Citadel Drive and east of Whiskey Road are zoned for Chukker Creek (outlined in yellow).

### Impact

	Estimated Enrollment		Estimated Percent Utilization		Estimated Percent minority		Estimated Percent F/R Meals	
	Proposed	Amendment 1	Proposed	Amendment 1	Proposed	Amendment 1	Proposed	Amendment 1
Chukker Creek	662	853	85%	109%	49%	44%	49%	44%
East Aiken	499	308	77%	47%	46%	57%	53%	69%

## Amendment 2



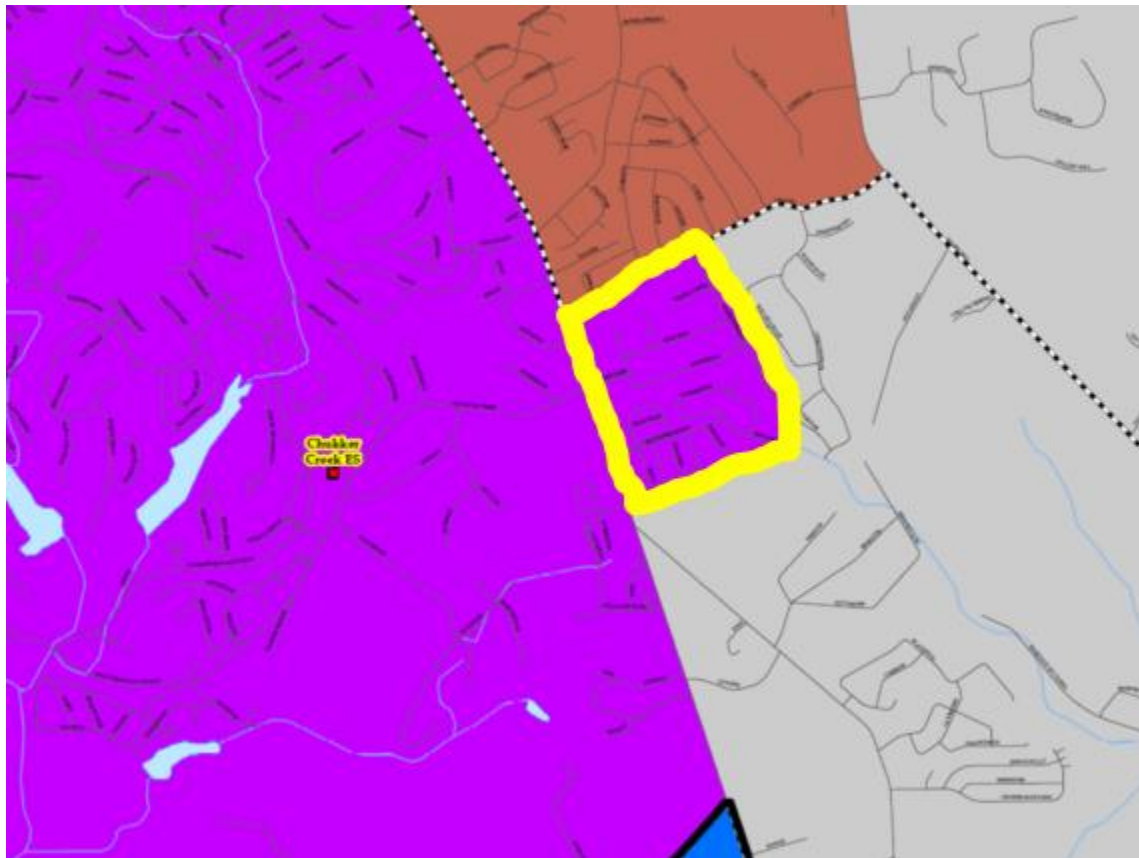
### Description

Areas proposed for East Aiken Elementary south of Citadel Drive, east of Whiskey Road and north of a line just below the South Meadows neighborhood (inclusive of South Meadows) are zoned for Chukker Creek (outlined in yellow).

### Impact

	Estimated Enrollment		Estimated Percent Utilization		Estimated Percent minority		Estimated Percent F/R Meals	
	Proposed	Amend-ment 2	Proposed	Amend-ment 2	Proposed	Amend-ment 2	Proposed	Amend-ment 2
Chukker Creek	662	754	85%	96%	49%	47%	49%	50%
East Aiken	499	407	77%	62%	46%	50%	53%	53%

## Amendment 3



### Description

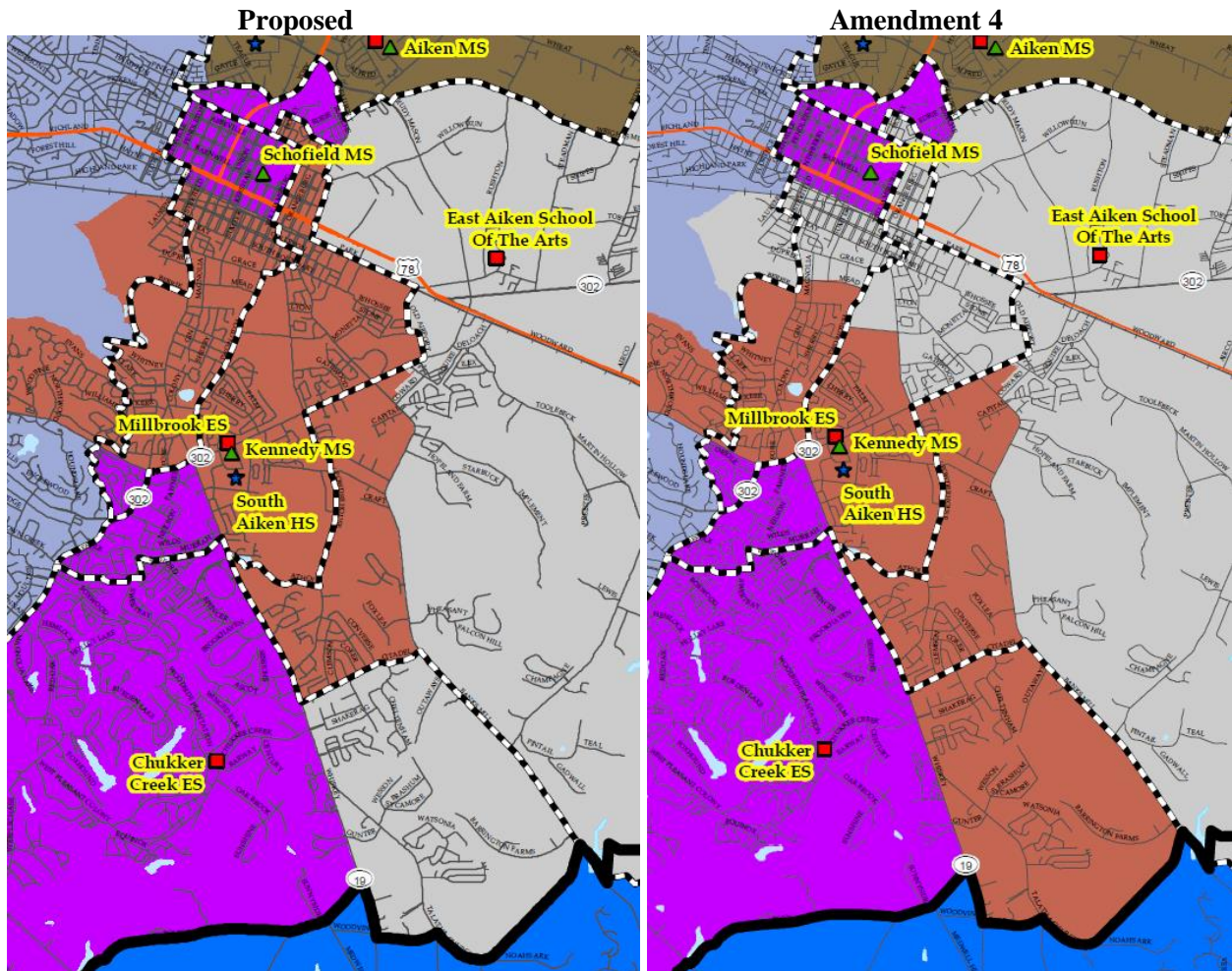
Areas proposed for East Aiken Elementary south of Citadel Drive, east of Whiskey Road, west of a line just east of Ramblewood Road, and north of a line just below the South Meadows neighborhood (inclusive of South Meadows) are zoned for Chukker Creek (outlined in yellow).

### Impact

	Estimated Enrollment		Estimated Percent Utilization		Estimated Percent minority		Estimated Percent F/R Meals	
	Proposed	Amend-ment 3	Proposed	Amend-ment 3	Proposed	Amend-ment 3	Proposed	Amend-ment 3
Chukker Creek	662	726	85%	93%	49%	47%	49%	46%
East Aiken	499	435	77%	67%	46%	49%	53%	58%



## Amendment 4



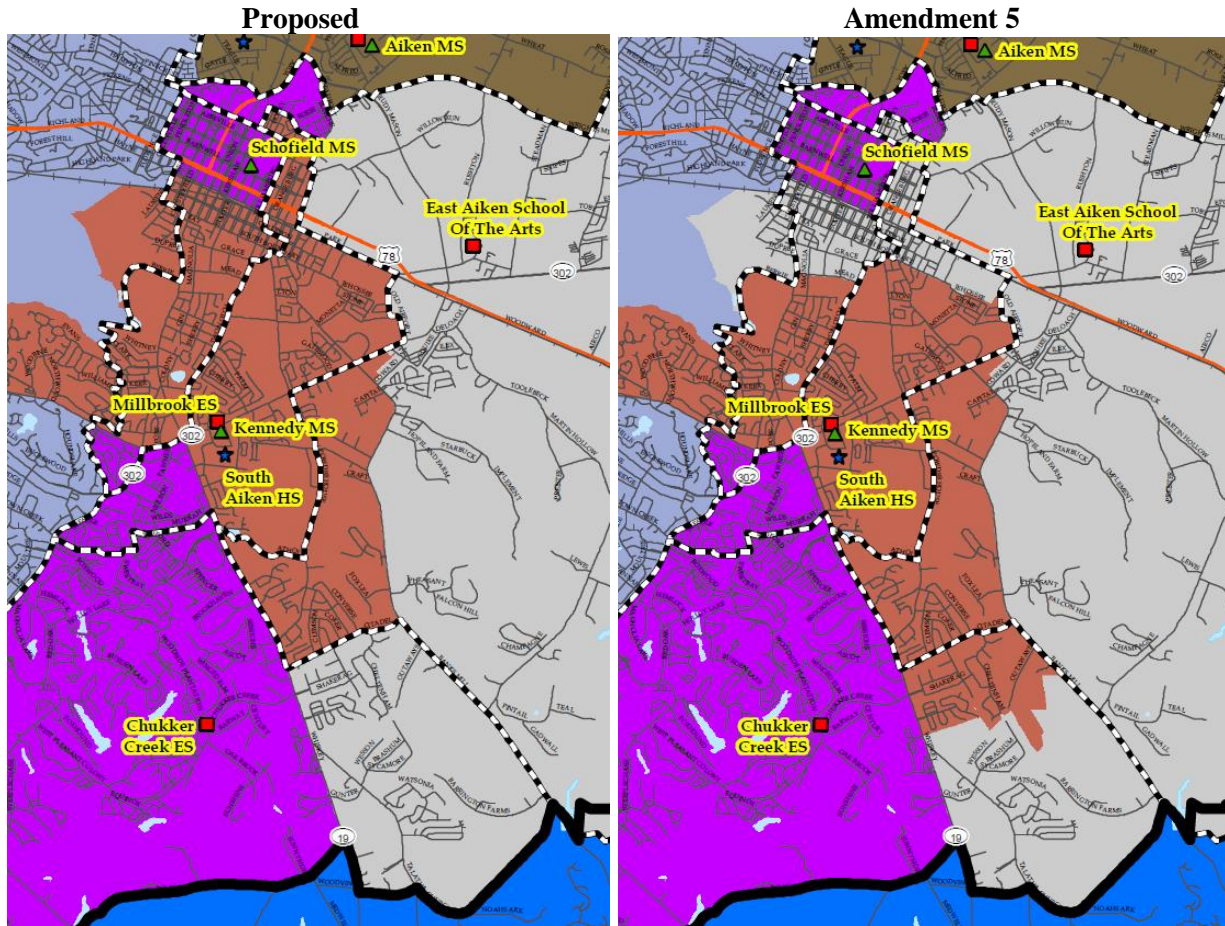
## Description

Areas proposed for East Aiken Elementary south of Citadel Drive and east of Whiskey Road are zoned for Millbrook. Areas proposed for Millbrook north of Pine Log and east of Powder House, north of Mead between Whiskey and Two Notch, north of Berrie, and west of Beaufort are zoned for East Aiken.

## Impact

	Estimated Enrollment		Estimated Percent Utilization		Estimated Percent minority		Estimated Percent F/R Meals	
	Proposed	Amend-ment 4	Proposed	Amend-ment 4	Proposed	Amend-ment 4	Proposed	Amend-ment 4
Millbrook	714	724	94%	95%	54%	42%	61%	49%
East Aiken	499	489	77%	75%	46%	63%	53%	72%

## Amendment 5



### Description

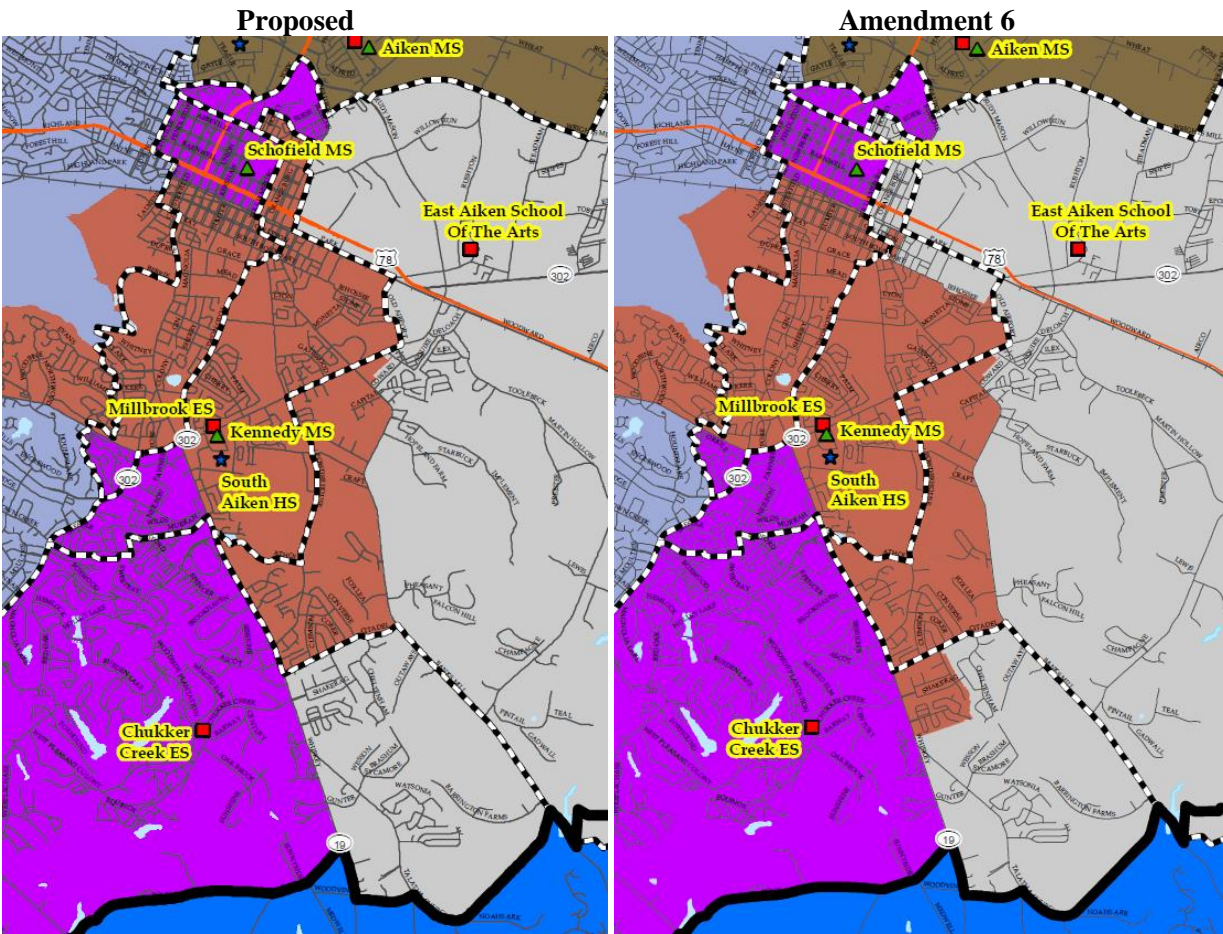
Areas proposed for East Aiken Elementary south of Citadel Drive, east of Whiskey Road and north of a line just below the South Meadows neighborhood (inclusive of South Meadows) are zoned for Millbrook. Areas proposed for Millbrook north of South Boundary, north of Mead between Whiskey and Two Notch, north of Berrie, and west of Beaufort are zoned for East Aiken.

### Impact

	Estimated Enrollment		Estimated Percent Utilization		Estimated Percent minority		Estimated Percent F/R Meals	
	Proposed	Amendment 5	Proposed	Amendment 5	Proposed	Amendment 5	Proposed	Amendment 5
Millbrook	714	724	94%	95%	54%	47%	61%	49%
East Aiken	499	489	77%	75%	46%	56%	53%	72%



Amendment 6



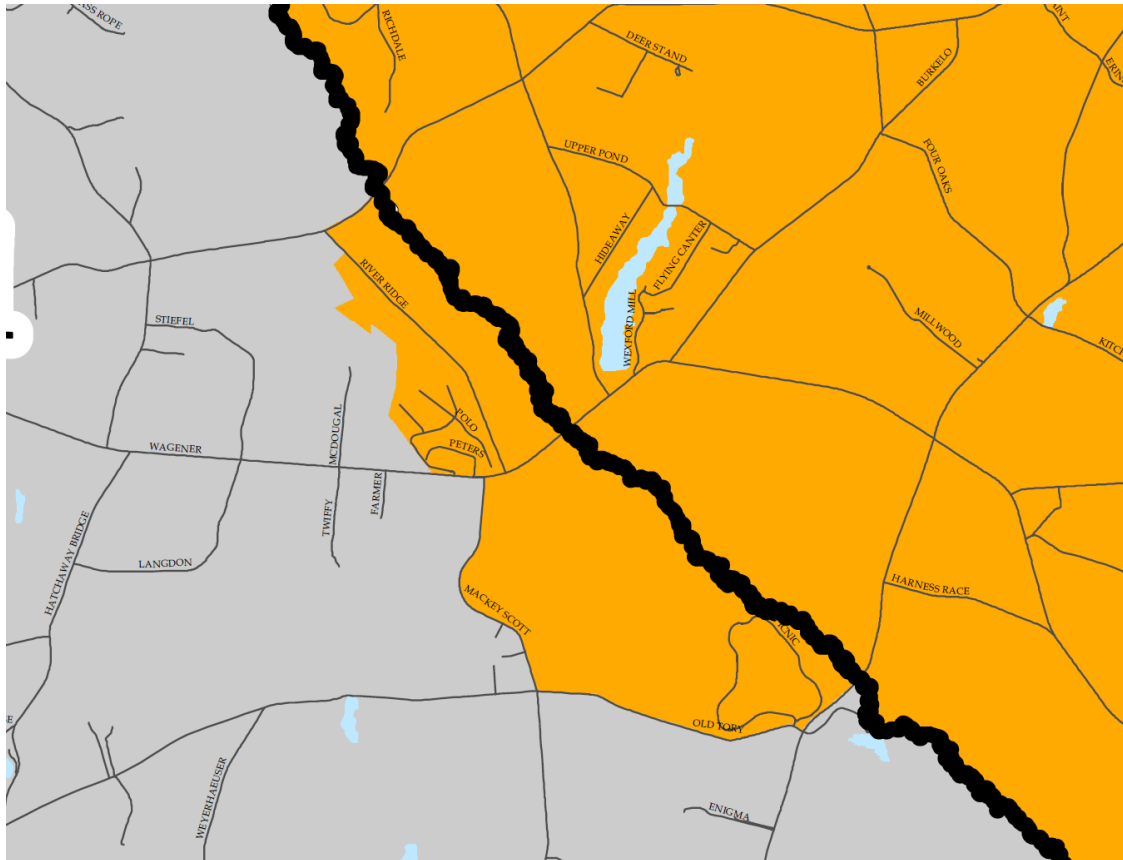
**Description**

Areas proposed for East Aiken Elementary south of Citadel Drive, east of Whiskey Road, west of a line just east of Ramblewood Road, and north of a line just below the South Meadows neighborhood (inclusive of South Meadows) are zoned for Millbrook. Areas proposed for Millbrook north of South Boundary, and west of Beaufort are zoned for East Aiken.

**Impact**

	Estimated Enrollment		Estimated Percent Utilization		Estimated Percent minority		Estimated Percent F/R Meals	
	Proposed	Amend-ment 6	Proposed	Amend-ment 6	Proposed	Amend-ment 6	Proposed	Amend-ment 6
Millbrook	714	719	94%	94%	54%	48%	61%	56%
East Aiken	499	494	77%	76%	46%	54%	53%	62%

## Amendment 7



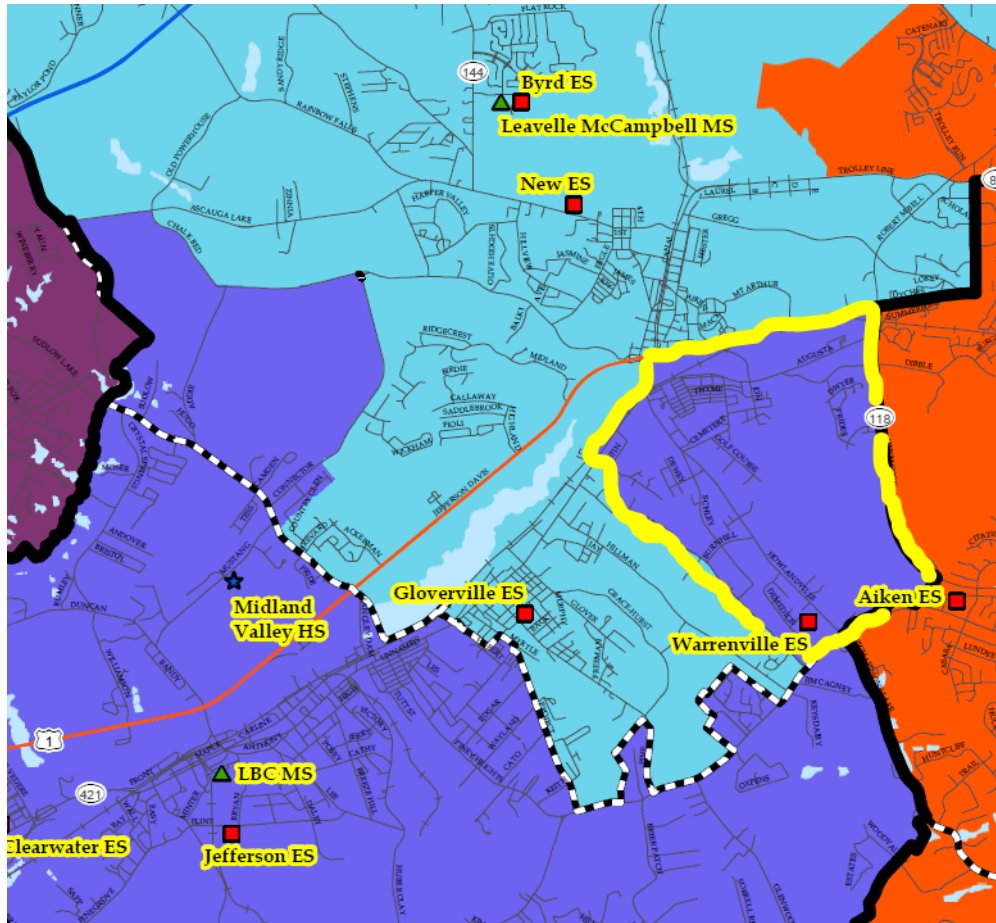
### Description

Areas proposed for Area One schools west of the South Edisto River, south of Coleman Bridge Road, north of Old Tory Trail, and generally following a line along Mackey Scott Road and River Ridge Road are zoned for Area Four. This amendment would impact a total of 3 current students.

### Impact

	Estimated Enrollment		Estimated Percent Utilization		Estimated Percent minority		Estimated Percent F/R Meals	
	Proposed	Amend-ment 7	Proposed	Amend-ment 7	Proposed	Amend-ment 7	Proposed	Amend-ment 7
Busbee Corbett	715	718	76%	76%	51%	51%	73%	73%
Oakwood Windsor	477	476	66%	65%	53%	53%	84%	84%
Aiken Middle (6 <sup>th</sup> Grade)	620	619	80%	80%	61%	61%	66%	66%
Kennedy Middle	662	661	67%	67%	44%	44%	47%	48%
Wagener Salley High	293	293	54%	54%	48%	48%	71%	71%
South Aiken High	1488	1488	90%	90%	40%	40%	42%	42%

## Amendment 8



### Description

Areas proposed for Langley-Bath-Clearwater south of US 1 and North of Pine Log between Legion and the Robert Bell Parkway (outlined in yellow) are zoned for Leavelle McCampbell. This amendment splits Warrenville Elementary between LBC and LMMS.

### Impact

	Estimated Enrollment		Estimated Percent Utilization		Estimated Percent minority		Estimated Percent F/R Meals	
	Proposed	Amendment 8	Proposed	Amendment 8	Proposed	Amendment 8	Proposed	Amendment 8
LBC	698	621	88%	78%	39%	41%	67%	68%
LMMS	503	580	67%	77%	48%	44%	70%	69%